



## Tommy Flowers Mews

**£750,000**

Situated in the highly sought after Millbrook Park Development is this modern End of Terrace 3 bedroom 2 bathroom property set in a quiet mews location away from road. On the ground floor the property consists of a modern kitchen -breakfast room, w/c and a stunning reception room with direct access onto a private rear garden. The first floor boasts 2 double bedrooms and a family bathroom on the second floor there is the stunning master bedroom with en-suite. The property is set in a fantastic location close to amenities and transport links for easy access around the city as well as local green spaces. Further benefits include oak engineered floors, Fitted window shutters, Off-street parking both to front and back with step free access. Option for fibre broadband. Sole Agents

### Viewing

Please contact our Mill Hill Office on 020 8959 0011 if you wish to arrange a viewing appointment for this property or require further information.



3



2

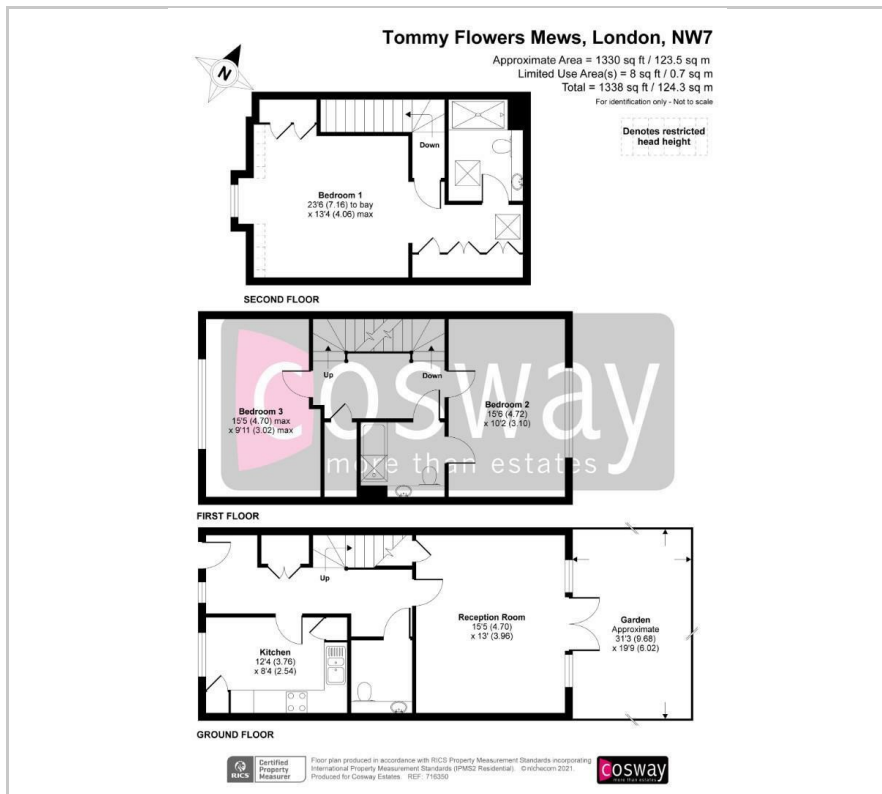


1



B

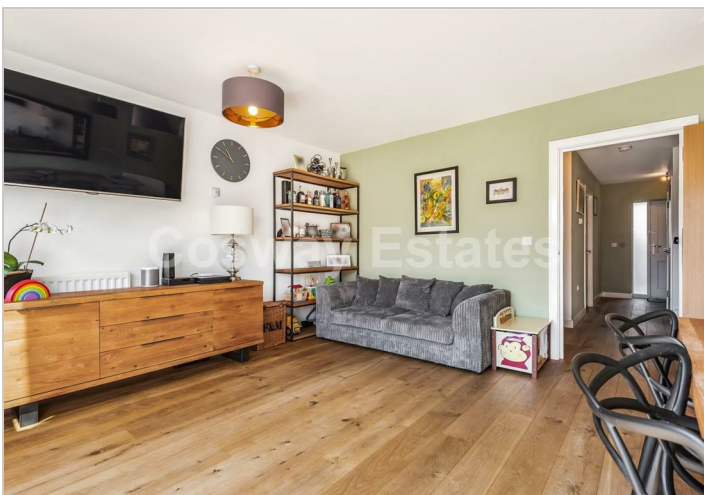
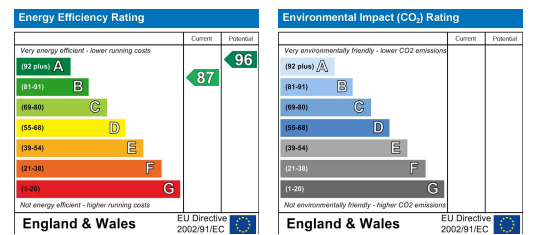
## Floor Plan



## Area Map



## Energy Efficiency Graph



These particulars, whilst believed to be accurate are set out as a general outline only for guidance and do not constitute any part of an offer or contract. Intending purchasers should not rely on them as statements of representation of fact, but must satisfy themselves by inspection or otherwise as to their accuracy. No person in this firm's employment has the authority to make or give any representation or warranty in respect of the property.